

# *ignite* **STUDIOS** | @nrcg

STUDIO INFORMATION  
AND APPLICATION  
2019 – 2020

**nrcg** | northern rivers  
*community gallery*

# ignite STUDIOS | @nrcg

**Ignite Studios** is an extension of the **Northern Rivers Community Gallery (NRCG)**, a community-engaged cultural hub in the Northern Rivers region, owned and operated by Ballina Shire Council.

Located in the heart of the Ballina CBD, adjacent to the **NRCG** and housed in the historic former Ballina Fire Station, **Ignite Studios** provides a dynamic shared access space supporting the development and participation of creative pursuits. Facilities include three subsidised leased studio spaces, a visiting artist-in-residence (AiR) studio and two access spaces for workshops, creative events, pop-up exhibitions, meetings and special projects.

## HISTORY

The beautiful, heritage listed premises were previously used as a Fire Station for approximately 80 years. The Ballina Fire Station operations relocated to new premises in 2015 and the former Ballina Fire Station at 60 Crane Street was then acquired by Ballina Shire Council.

Built in the same architectural style as the NRCG and located in the adjoining property, the former Ballina Fire Station provided an exceptional opportunity to expand the facility and services of NRCG. Temporary use of the building for a trial period of twelve months was provided by the Council as an extension of NRCG operations for use as a multi-disciplinary art space. In December 2018, Council endorsed the the ongoing use of the premises as an extension of NRCG.

Refurbishment works were carried out during 2017 and 2018 for the adaptive re-use of the premises, celebrating the heritage values of the building and ongoing enjoyment of the facility for the whole community.

## THE FACILITIES

**Ignite Studios** offers two venues to support four activities for the growing demand of local arts and cultural activities. This includes studio spaces; an artist-in-residence studio; workshop spaces and an experimental project space utilising the original 'Engine Room'. The 'Engine Room' doubles as both an education and an experimental creative project space.

## WORKSHOP SPACES

The 'Engine Room' and the 'Locker Room' (floor plan reference - workshop spaces #1 and #2) are dedicated workshop and/or project spaces available for hire when not in use for Gallery programs. The 'Engine Room' can also be utilised for other experimental or pop-up creative projects.

## STUDIO SPACES

The three studio spaces (floor plan reference - Studios #1, #2 and #4) utilise the original residential living areas and range in size from 10m<sup>2</sup> to 18m<sup>2</sup>. The studio spaces are available for a twelve month lease to creative practitioners from all disciplines, including but not limited to: painting, craft, digital media, photography, film, independant creative industry, arts administrators, curators, design, performance, sculpture and writing. Practitioners from Ballina Shire, Northern Rivers and across NSW are welcome to apply.

## ARTIST-IN-RESIDENCE STUDIO

The artist-in-residence studio (floor plan reference - AiR) provides a residential and separate studio space to visiting artists from outside the region (national or international). The program provides a single artist dedicated time to focus on the development of their creative practice or a specific project. AiR's can take place for a minimum of four weeks and up to a maximum of twelve weeks length of time.



Image: Monkey Monkey Shake Shake - 'Ignite Studios @ NRCG'

## STUDIO SPACE - APPLICATION INFORMATION

The subsidised studio spaces at **ignite Studios @ NRCG** are designed to encourage co-working and an open platform for professional development and opportunity. Providing greater access to shared creative space in the Northern Rivers region, Ignite Studios aims to support and nurture innovative arts and creative industry through:

- provision of subsidised workspaces
- enabling creative projects and/or creative start-ups
- networking artists with arts influencers, local communities and peers through NRCG annual program
- building a hub for creative industry and ideas

The three spaces pertaining to this application are designated as Studio #1, Studio#2 and Studio #4. Refer floor plan for facility layout.

### INCLUDED

- Empty space with basic lighting/power outlets and picture rails
- All outgoing incl. electricity/water\*
- Outdoor cold water wash basin area
- Private & semi-private, lockable studio spaces
- 24 hour access
- Air conditioning (studios 1 and 4 only)
- Bathroom facilities
- Wireless internet access (when available)
- Cross promotion in NRCG online marketing (when applicable)
- Wheelchair accessible
- Professional development and networking opportunities through the annual NRCG program and other special events.
- Ability to sell products through NRCG Shop (subject to a 33% consignment commission)
- Standard Waste Collection and grounds maintenance
- Initial 12 month lease period with possibility to renew
- Rent beginning from \$70 (incl. gst) per week
- Ample street parking

### Conditional Inclusions

- A kitchenette (**Note:** only available if the residential AiR space is not in use).
- Wireless internet is installed for Gallery programs and studio tenants can utilise free of charge when available. (**Note:** this is a courtesy and not included in the lease agreement)
- Renters can utilise additional spaces, 'The Engine Room' and 'The Locker Room' to run workshops or special projects for an additional fee. (**Note:** standard workshop space hire fees are applicable)

\* exception for high power consumption equipment such as kilns. Usage would be metered and charged at an additional cost based on monthly usage.

### STUDIO SPACE RENTAL FEES

Studio space rental is paid monthly in advance and a Direct Debit from a nominated bank account will be required to be set-up at time of signing the agreement. A security deposit equivalent to 4 weeks rent will be required.

Studio renters can access 'The Locker Room' and 'The Engine Room' for an additional fee (standard workshop space hire fees) when available.

Studio #	Size	Weekly Rental
Studio 1	3.6 x 4 meters (14 m <sup>2</sup> )	\$110
Studio 2	3.6 x 4 meters (14 m <sup>2</sup> )	\$110
Studio 4	3.4 x 3 meters (10 m <sup>2</sup> )	\$70

## STUDIO AGREEMENT

Successful applicants will be issued with a Studio Agreement governing all aspects of their access to the Ignite Studio facilities. Due to the heritage of the building, access and use will be in accordance with certain prescribed conditions for example drilling into, modifying or fixing on to the walls is prohibited. In addition to these conditions, the general terms of the agreement will include the following.

- The Renter will indemnify and keep indemnified Ballina Shire Council (and NRCG), its officers, agents and contractors against all liability for death or injury to persons or loss of or damage to property (including property of BSC and NRCG) and all actions, claims, demands, losses, damages, costs and expenses which may be suffered or sustained pursuant to their Studio Rental Agreement.
- This indemnity will also apply to any persons and property that is on site at Ignite Studios or NRCG as a consequence of the actions of the Renter either pursuant to or in breach of the conditions of their Studio Agreement.
- Renters are required to have their own Public Liability insurance with cover to the value of \$20 million.
- The Renter agrees to comply with all necessary workplace health and safety laws and regulations.
- Access is available 24/7. Standard residential noise restrictions apply after 10pm seven days a week.
- The studio spaces are not open to the general public except for open days or special events specified and organised by NRCG.
- Renters are responsible for ensuring the premises are fully secure on leaving the facility, managing waste collection and for keeping their studio clean and tidy at all times.
- Renters are to work within their nominated studio unless an alternative arrangement has been made with NRCG management.
- Studios cannot be utilized for industrial or semi-industrial creative processes, retail sales outlet, public events, unlicensed alcohol sales.

## APPLICATIONS ARE OPEN TO

- Creative practitioners from all disciplines, including but not limited to painting, craft, digital media, photography, sculpture, performance, film, music, design, arts administrators, curators and writers.
- Small independent creative industry (such as film, design, music, architecture, arts administrators, curators etc)
- Creative practitioners from Ballina, Northern Rivers and across NSW are welcome to apply
- Creative practitioners from all career-stages
- Applicants must be 18 years of age or above
- Post-graduate students are eligible to apply. Applications from undergraduate students are not eligible



Images: UUendy Lau - Re-experiencing Waves Exhibition room view 2018 (left); Andrew Christie - giving 3D printing demo to local school students (right)

# ignite **STUDIOS** | @nrcg

## SELECTION CRITERIA

Final selections will be made balancing a mix of art forms, career stage and studio experience within the facility, in order to encourage diversity and a vibrant creative hub encouraging dialogue, exchange and innovation.

- Quality of work or projects and originality of ideas.
- Value of a studio to the development of the practitioner.
- Value of contribution to the creative community and public program of Ignite Studios & the Ballina Shire.
- Suitability of creative activity for a studio space.
- Commitment of time to using the studio.

Allocation of studios will be undertaken by a Selection Committee established by Northern Rivers Community Gallery. The Committee includes the Gallery Coordinator, an external arts industry representative and a Ballina Shire Council representative.

## STUDIO VIEWING

For information on available dates to view the spaces contact Lee Mathers, Gallery Coordinator by phone on 02 6686 1494 or by email [lee.mathers@ballina.nsw.gov.au](mailto:lee.mathers@ballina.nsw.gov.au)

## NOTIFICATION

Applicants will be notified up to two weeks after the application closing date - applicants will have the option to accept or decline the offer.

Completing this Application does not obligate you to accept a studio and it also does not guarantee that you will be offered a studio. Applicants for studios may be required to attend an interview as part of the assessment of their application.

## CONTACT

For all enquires please contact:

Lee Mathers - Gallery Coordinator

E: [lee.mathers@ballina.nsw.gov.au](mailto:lee.mathers@ballina.nsw.gov.au)

P: 02 6686 1494



Images: Studio #1 (left); Elaine Drysdale - Studio detail (right)

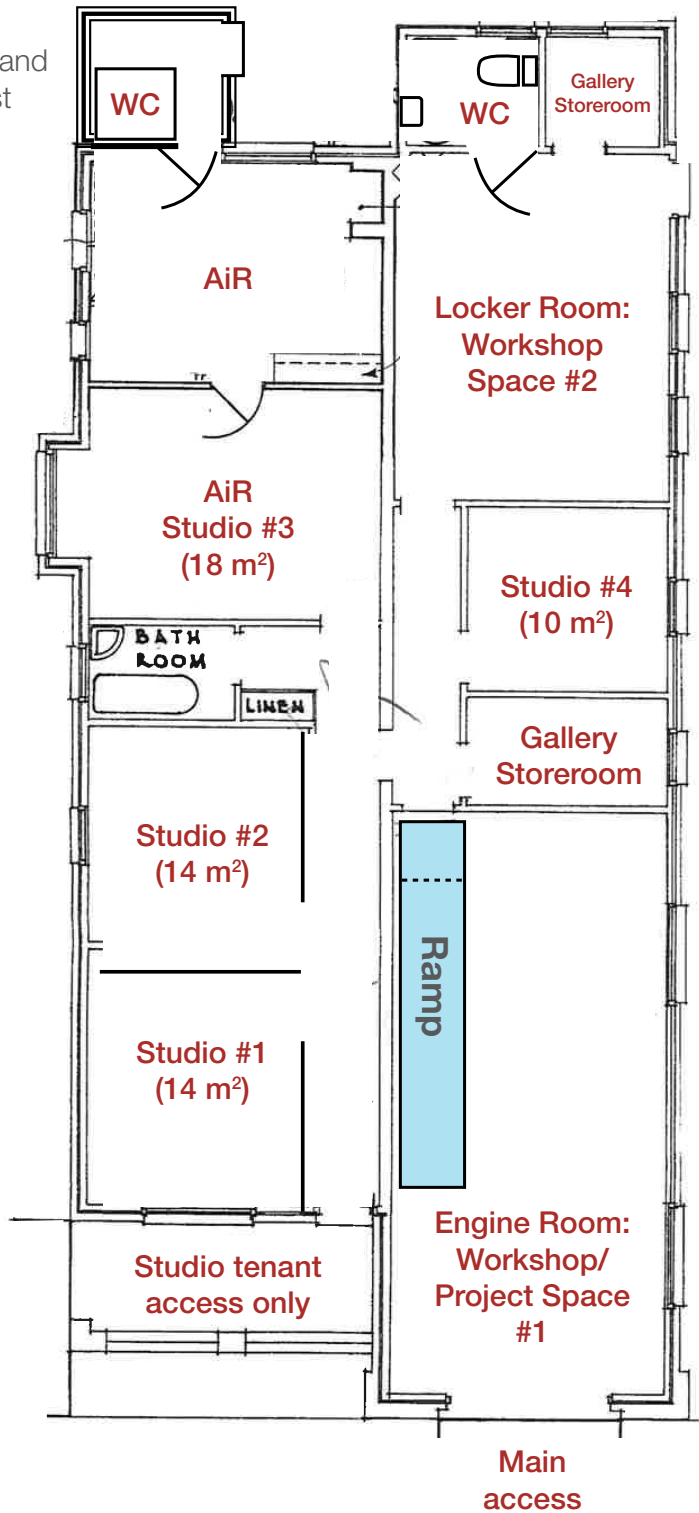
# ignite **STUDIOS** | @nrcg

## FLOOR PLAN

Eastern wing is accessible to studio tenants only. All community access spaces are on the Western wing of the facility.

### East Wing:

Studio tenants and  
Residency Artist  
Spaces ONLY



### West Wing:

Community Access  
Spaces; and Studio #4 (fully  
lockable)

STREET FRONTAGE